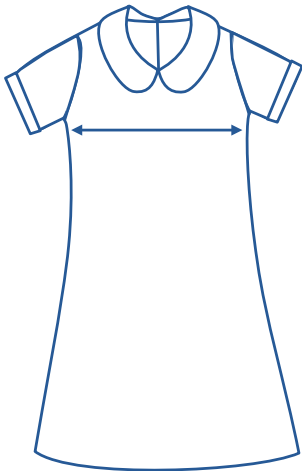




# Alinta Apparel Size Chart

| Dress                      |      |    |      |       |     |      |      |    |      |     |      |     |  |
|----------------------------|------|----|------|-------|-----|------|------|----|------|-----|------|-----|--|
| Alinta Size                | J2   | J4 | J6   | J8    | J10 | J12  | J14  | L8 | L10  | L12 | L14  | L16 |  |
| 1/2 Chest Measurement (cm) | 32.5 | 34 | 36.5 | 38.75 | 41  | 43.5 | 46.5 | 49 | 51.5 | 54  | 56.5 | 59  |  |

## How to select your size:



- 1 Find a similar fitting garment to the item you wish to purchase.
- 2 Lay the garment flat on a hard surface.
- 3 Measure the chest in centimetres as outlined in the diagram.
- 4 Select the size closest to your measurement, remembering to select the larger size if your measurement is in between sizes.

### Note:

- Exchange is available for incorrect size selection.
- Not all sizes are carried. For sizes not carried, contact the Uniform Shop to organise a Special Make-Up Order.